



EMERGENCY RESPONSE · IMPACT REPORT

Violence does not stop in a crisis. *Neither do we.*

Between 28 February and 15 May 2026, ABAAD's teams responded to a new wave of mass displacement across Lebanon. They kept up protection, case management, shelter and community work for women, girls, men and boys living through armed conflict.

PERIOD
28 Feb to 15 May 2026

PUBLISHED
June 2026

CONTENTS

What's *inside* this report.

01	Context Operating amid escalating challenges.	p. 03
01 · b	Where We Work Service footprint across Lebanon.	p. 04
02	At a Glance Headline numbers for the period.	p. 05
03	The Team Behind the Response Commitment, consistency, continuity.	p. 06
04	GBV Prevention & Community Outreach Awareness, PSS, family approach.	p. 07
05	Voices from the Community What participants told us.	p. 10
06	Case Management & Direct GBV Response Stories from the response.	p. 11
07	Safe Shelter Protection at scale.	p. 13
08	Men and Boys Engagement A standalone pillar of the response.	p. 14
09	Gender Audit of Collective Shelters 52 sites, 58 indicators.	p. 15
10	Capacity Building Six training streams.	p. 17
11	Donor Acknowledgements The partners who make this possible.	p. 18
12	Contact & Helplines How to reach us.	p. 19

01 Lebanon was already *weakened*. Conflict amplified every existing risk.

For women and girls, conflict does not so much create new risks as deepen the ones already present, pushing them past the point families can manage.

On 28 February 2026, regional armed conflict escalated sharply, setting off a new wave of mass displacement across Lebanon. As strikes resumed and intensified across the country, hundreds of thousands of people were forced from their homes into collective shelters, host communities, and makeshift arrangements.

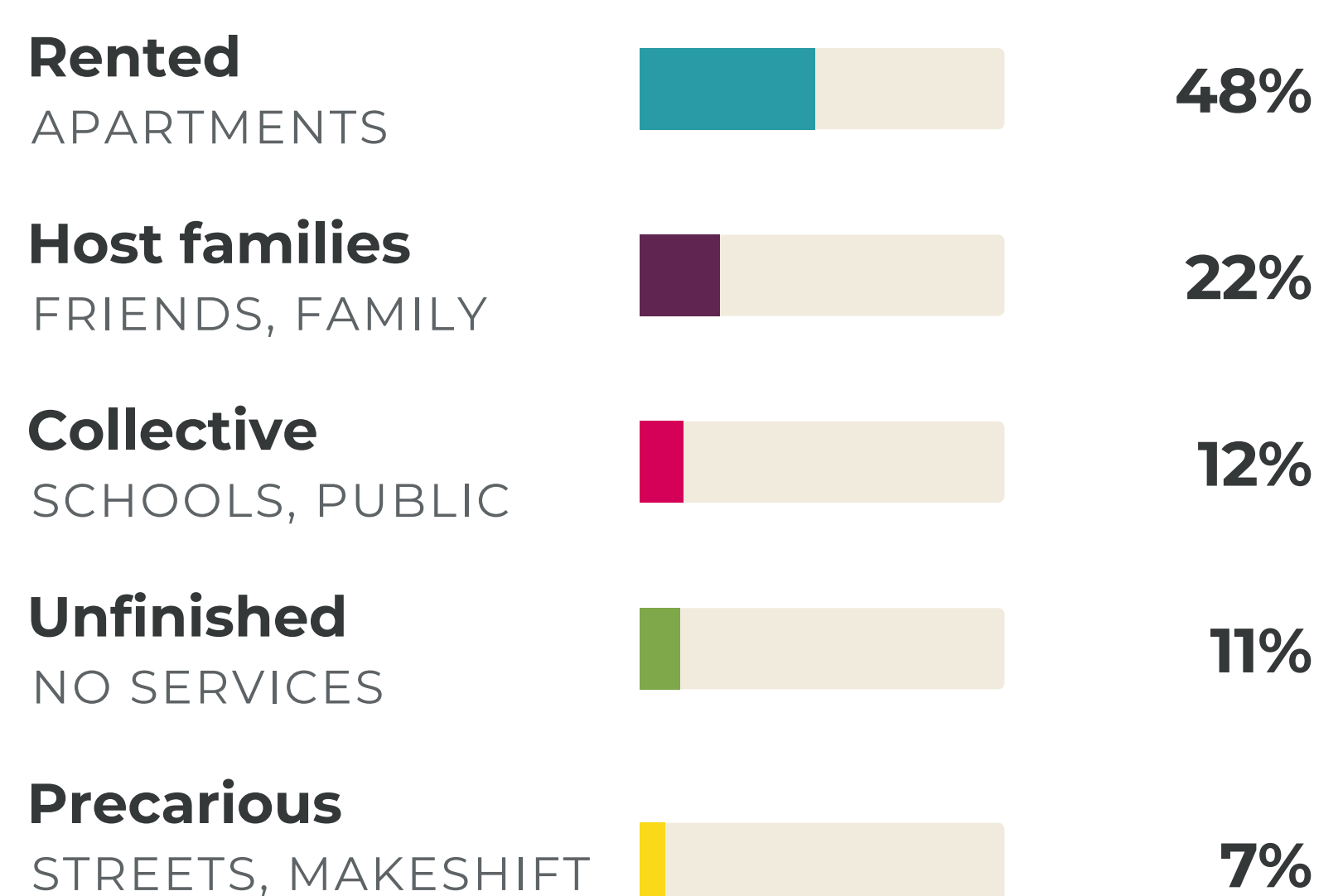
By late April 2026, more than one million people had been registered as displaced, yet only around 117,000 were housed in collective shelters. The majority found shelter wherever they could: in rented apartments, in unfinished buildings, with host families, or in precarious conditions with no services at all.

Nearly half the population was already living in poverty before the escalation, and public services were stretched well beyond their limits. In conditions like these, where displacement, overcrowding, and fractured support networks meet the collapse of essential services, gender-based violence intensifies at the very moment that access to protection breaks down.



Where displaced people are living

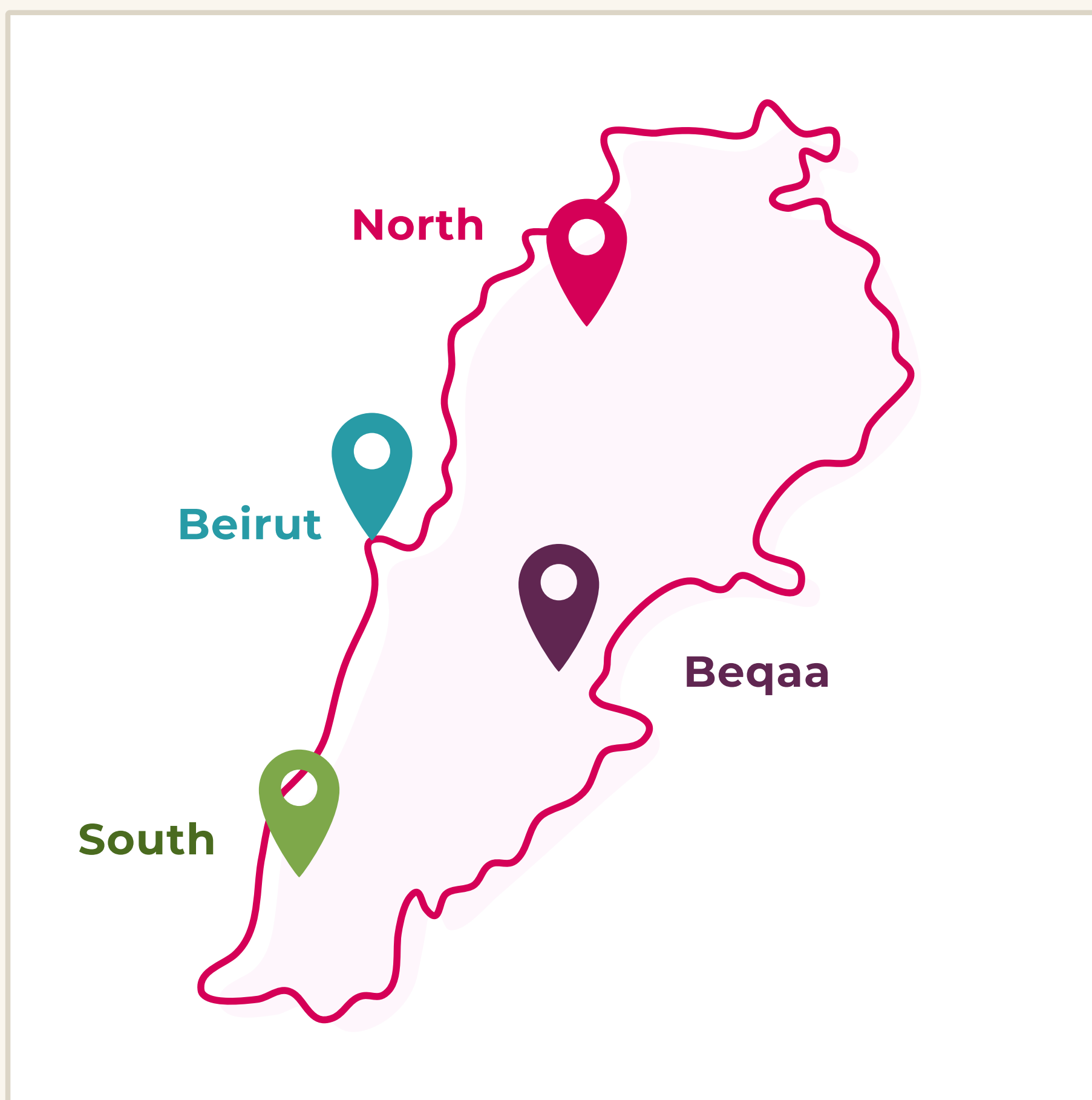
ESTIMATED · LATE APR 2026 · ~1M+ DISPLACED



ABAAD mobilized from the first days of the escalation. This report sets out what our teams delivered between 28 February and 15 May 2026.

01 · B **Where we work.**

Maintaining our existing presence across all seven Lebanese governorates, with four regional hubs anchoring the emergency response.



7 Governorates reached during the reporting period

● **North**
 Tripoli · Akkar · Wadi Khaled · Knayse
Girls' empowerment & education, outreach, audit sites

● **Beirut**
 HQ · Community Centres · Safe Shelter · Men's Centre
Case management, legal counseling, shelter, helplines

● **Beqaa**
 Arsal · Zahle · Baalbek
PSS sessions, GBV case management training, outreach

● **South**
 Saida · Tyre · Nabatieh
Awareness sessions, returning-community support

52 shelters assessed
8,091 residents covered
4,166 people reached in sessions

02 At a *glance*.

Seven governorates. One coordinated response.

TOTAL REACH

4,166 people

reached through awareness and sensitization sessions across collective shelters and displacement settings.

3,407 women & girls	759 men & boys	7 governorates	10 weeks
-------------------------------	--------------------------	--------------------------	--------------------

PROTECTION

169

new GBV cases identified among displaced populations and entered into case management.

CONNECTIVITY

1,852

power banks and phone pouches distributed to displaced women.

CASH ASSISTANCE

70

households supported with emergency protection cash assistance.

GENDER AUDIT

52

collective shelters assessed across all seven Lebanese governorates.

COVERAGE

8,091

displaced persons hosted across the assessed shelter sites.

PSEA

316

frontline workers trained on Protection from Sexual Exploitation & Abuse.

CAPACITY

304

additional frontline workers trained across capacity-building streams.

HELPLINES

24/7

three confidential safe lines maintained continuous operation across the period.

03 The team behind *the response*.

A response built on commitment, consistency, and continuity of care.

When the escalation began on 28 February, ABAAD's teams were among the first to respond, not because we rushed in, but because we were already there. Field staff deployed to collective shelters, outreach workers reached communities that were hard to access, and case workers maintained follow-up with survivors even as movement grew difficult. In safe houses, shelter staff continued to provide round-the-clock support to residents.

ABAAD's response drew on years of established presence and institutional trust across Lebanon. Headquarters staff coordinated remotely, kept case management running online, and provided technical support to field teams working under pressure. The continuity of operations reflected the organization's deep roots in the communities it serves.



Even in war and in crises, women always shine in their roles and their efforts to keep going and keep their families going. Thank you ABAAD for these activities and this support.

PARTICIPANT · AWARENESS SESSION, SOUTHERN LEBANON

04 GBV prevention & *community outreach.*

Awareness, psychosocial support and community engagement reaching 4,166 people across Lebanon.

ABAAD's prevention teams worked across collective shelters and displacement settings throughout Lebanon, delivering awareness sessions, psychosocial support, and community engagement, through fixed safe spaces, outreach visits, and engagement in areas where fixed spaces were not accessible.

Awareness & sensitization

Sessions covered coping with stress and crisis, violence against women and girls, child protection, sexual-harassment prevention, online safety, PSEA, positive parenting, and available referral pathways.

Psychosocial support

Group psychosocial support (PSS) and recreational activities helped participants express emotion, ease stress, and stay connected through displacement. Art, group dialogue, and games created safer spaces in overcrowded settings where privacy and any sense of normal life were scarce.

Men & boys

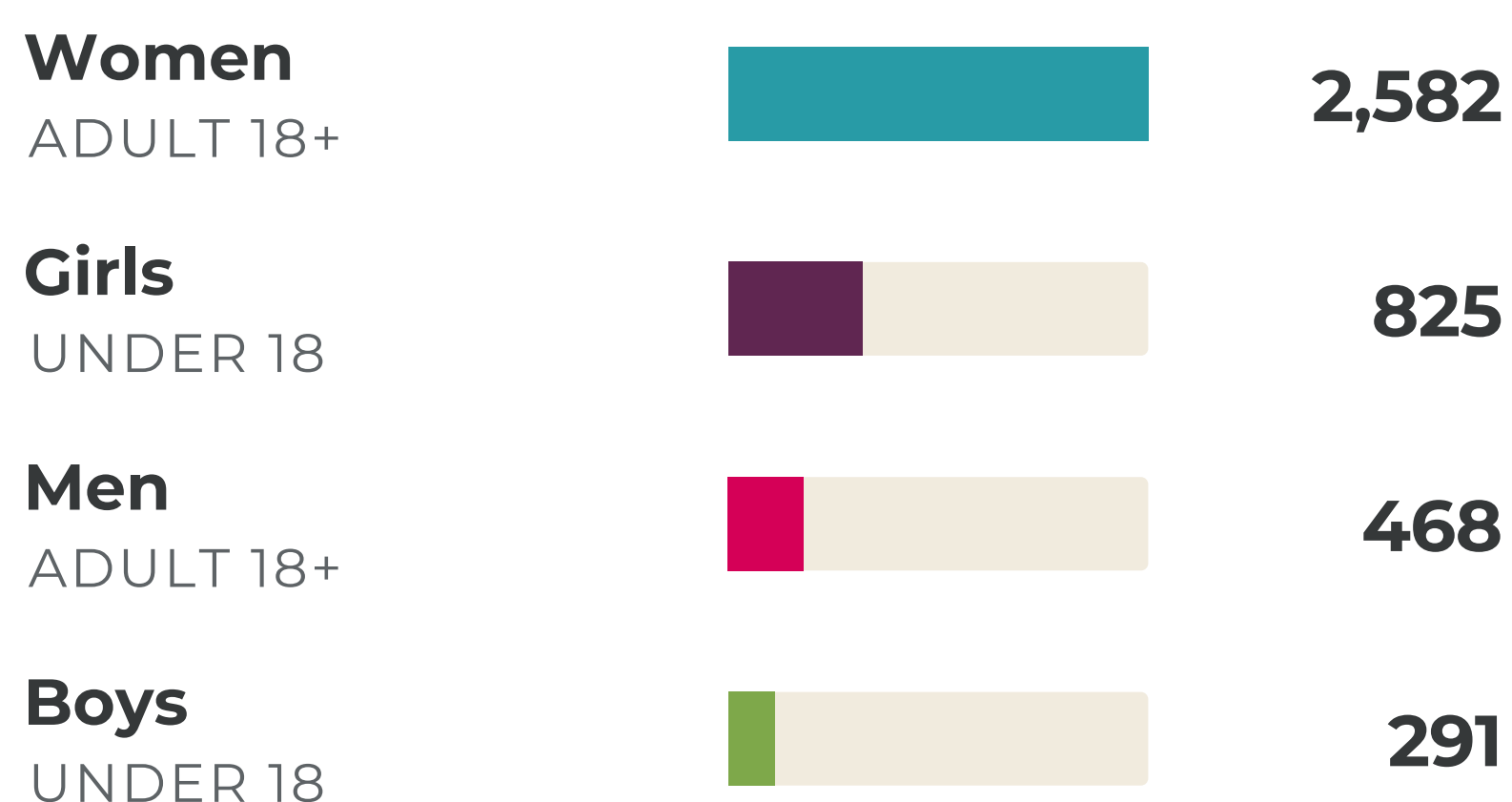
Sessions addressed mental health, healthy coping, non-violent communication, positive masculinities, and community support, with the aim of reducing harmful coping behaviors and strengthening protective roles within families.

Community engagement

Outreach extended to locations where fixed safe spaces could not be established, hard-to-reach communities, informal settlements, and areas with active displacement. Teams ran door-to-door outreach, distributed information materials, and provided Psychological First Aid.

Awareness & sensitization reach

TOTAL 4,166 PEOPLE · 28 FEB TO 15 MAY 2026



A holistic *family approach*.

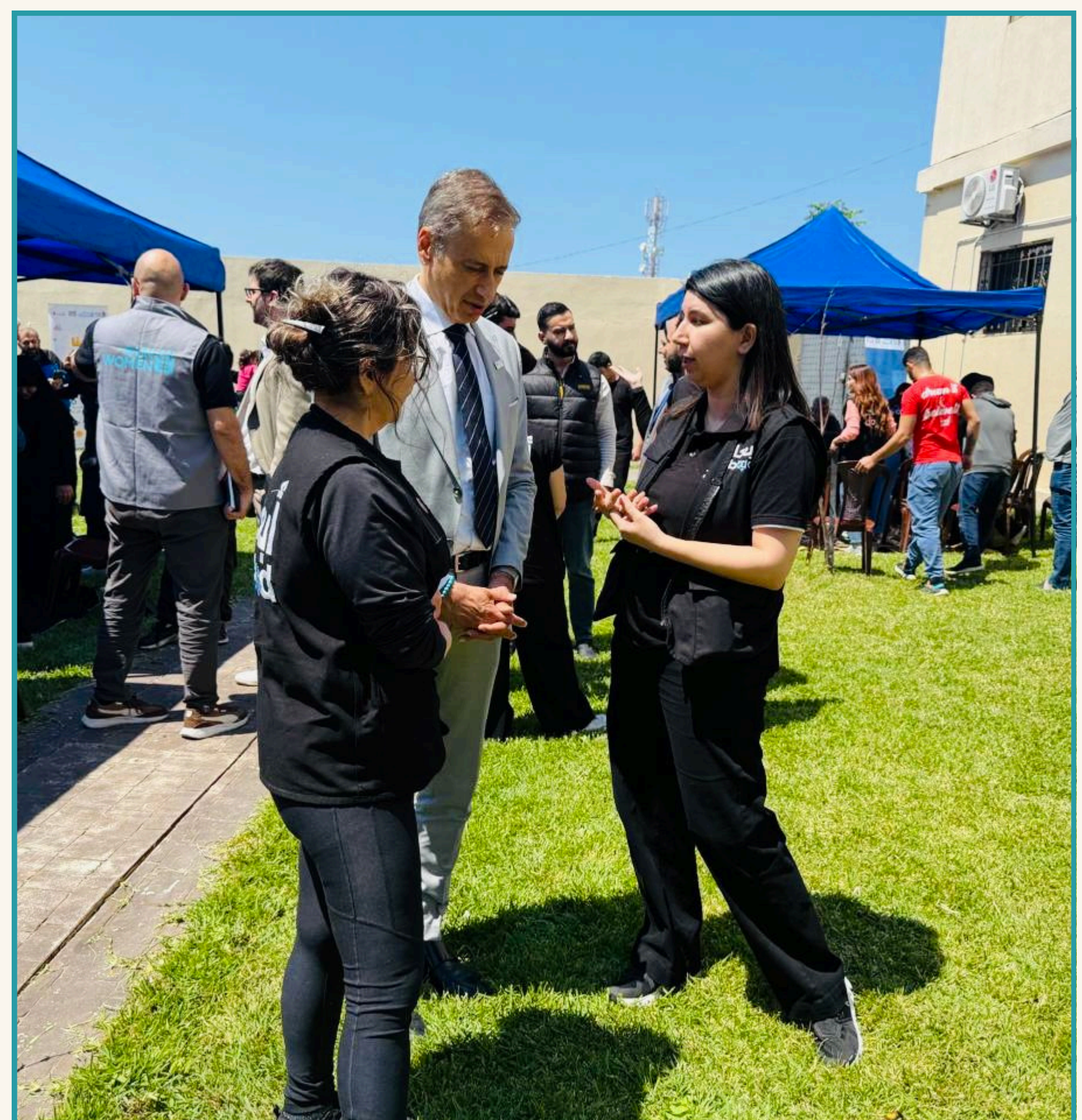
One of the defining features of ABAAD's emergency response, and one that has resonated strongly with participants and sector partners alike, is our holistic family approach. Rather than working with women and girls in isolation, our interventions address the entire family unit, engaging mothers, fathers, children, and adolescents through tailored but coordinated activities.

By creating parallel spaces, women's groups, men's sessions, and child-friendly activities running side by side, ABAAD enables families to process displacement together, building shared coping strategies and reducing the risk that stress within the family translates into violence. The approach is widely recognized within Lebanon's GBV coordination architecture as a model for integrated emergency response.

UN WOMEN REGIONAL DIRECTOR · FIELD VISIT, NORTH LEBANON

ABAAD welcomed Dr. Moez Doraid, UN Women Regional Director, to North Lebanon, where he observed activities for women, men, girls, and children displaced from the South, alongside host community members.

The visit included a meeting with Acting Governor of the North, Ms. Iman Al-Rafi'i, on the situation of displaced people and urgent needs. The delegation also observed the Jina El Dar bus in Al-Muhammara, Akkar, Art Expression sessions, harassment-protection awareness for girls, and an interactive puppet show teaching children about protection from violence in times of war.



Digital safety & coordinated communications



PUBLIC AWARENESS VIDEO WITH ISF

With Lebanon's Internal Security Forces, ABAAD produced a short awareness video with a single, clear message: if you or someone you know is experiencing violence, support is available. It amplified ABAAD's helplines and reinforced that reporting pathways remain functional even in active conflict.

DIGITAL SAFETY BOOKLETS

ABAAD rapidly disseminated booklets on Digital Safety from SGBV in Times of Conflict. Distributed as part of the Protection Kit, they cover online safety, digital privacy, cyber harassment, and how to seek help safely, integrated into awareness sessions across displacement sites.



05

In their *own words.*

Voices from awareness sessions, PSS groups and distribution activities.

Psychosocial support in these circumstances is no longer optional. It has become a necessity.

RETURNING DISPLACED WOMAN, SOUTHERN LEBANON

When I saw the balloon, I do not know why I felt happy. But I remembered birthdays and beautiful occasions and days of peace. Thank you ABAAD.

CHILD, RECREATIONAL ACTIVITY

Love yourself and be strong. My message today to every woman who thinks she is alone: we are all with you, because we all know what you are feeling.

PARTICIPANT, WOMEN'S GROUP SESSION

The information was very important. We took the numbers so we can use them when needed, and we became more aware that the most important thing right now is to protect ourselves and know how to act.

AWARENESS SESSION PARTICIPANT

You just told me that God willing we will drink coffee again in Bloudan. My heart rejoiced and my soul smiled. If it were not for hope, we truly could not continue or take a single step.

PARTICIPANT, GROUP SESSION

I really needed this power bank, especially during displacement and being scattered. Our phones die and we lose each other. And your presence makes us feel like we are being brought back together.

RECIPIENT, POWER-BANK DISTRIBUTION

Our homes are destroyed and our areas are still dangerous, but now we know that the most important thing is our psychological stability so we can stand by our children.

RETURNING DISPLACED WOMAN

06 Case management & *direct response.*

169 new GBV cases. 70 households supported with emergency cash. Stories from inside the response.

Throughout the period, ABAAD's community centres continued to provide psychosocial support, legal counseling, protection case management, referrals, and empowerment activities. Referrals arrived from partner NGOs, community members, and survivors themselves, a sign of the trust these services held even during active conflict.



IC'S STORY · 39 · SYRIAN · MOTHER OF FOUR

"I fell many times, but each time I got back up."

IC is a Syrian woman whose life has been marked by repeated cycles of hardship and displacement. Forced into a first marriage in 2003, she endured years of mistreatment before separating in 2016, and had fled to Lebanon in 2013 to rebuild her life with her children.

Three years ago her second husband abandoned the family, leaving her the sole provider for four children, one a son with chronic asthma. In March 2026 she received Emergency Protection Cash Assistance to relocate to a safer area.

"I used to feel lost and like I had no solution, but now I know there is a path, even if it is long."

A 30-YEAR-OLD SURVIVOR · LEBANESE

When one problem reveals another.

She first came to an ABAAD community centre for support with a breastfeeding difficulty. The assessment revealed something far larger: ongoing verbal and physical domestic violence taking a clear toll on her daily functioning and self-worth.

Over seven months of follow-up, the social worker helped her rebuild a daily routine, strengthen her self-care, and repair her relationship with her daughter, alongside legal counseling and a psychotherapy referral. When the war escalated she relocated, and follow-up now continues remotely.



More stories from the field.



A YOUNG WOMAN IN ZARIF · EARLY TWENTIES Emergency protection in a converted shelter.

During field coordination at a Zarif (Beirut) school that had been converted into a displacement shelter, the team identified a young woman in her early twenties in need of urgent protection. She had fled an unsafe home after being sexually harassed by her mother's husband, and was facing continued threats and psychological pressure.

An ABAAD social worker was deployed through the Ministry of Social Affairs representative at the shelter. The intervention plan combined immediate protection, regular PSS sessions, and legal referrals, alongside coordination with actors inside and outside the shelter to strengthen her support network.

A WOMAN IN ARSAL · 55 · LEBANESE · MOTHER OF THREE

Connection during displacement.

She was displaced to a collective shelter in Arsal with her husband and three young children, where ABAAD first met her during a Psychological First Aid session and power-bank distribution.

At follow-up in April 2026, she described the power bank as one of the most important things she had received, keeping her in touch with scattered family and allowing her children to continue their remote schooling. She asked to keep attending sessions, which offered a welcome break from the pressures of shelter life.

"During displacement my phone ran out of charge for a while. I was cut off from my family entirely."



07 Safe *shelter*.

Protection at scale, safe, confidential shelter for women and children fleeing violence.

ABAAD's safe shelter continued to operate throughout the period, providing secure, confidential accommodation for women and children who had fled violence, alongside comprehensive case management, legal support, and psychosocial services.



THREE SISTERS · 21, 22, 24 · SYRIAN-GERMAN Cross-border protection and reunification.

Referred through the German Embassy in Lebanon, the sisters had been taken to Syria by their father fifteen years earlier, where they lost contact with their German mother and endured years of abuse by extended family.

After reconnecting with their mother, they fled Syria for Lebanon, needing urgent protection while their travel documentation was finalized. ABAAD provided counseling, coordinated their passports and travel, liaised with Internal Security Forces, and accompanied them to the airport.

On 2 March 2026, they traveled to Germany and were reunited with their mother after years of separation.

08 Men and boys *engagement.*

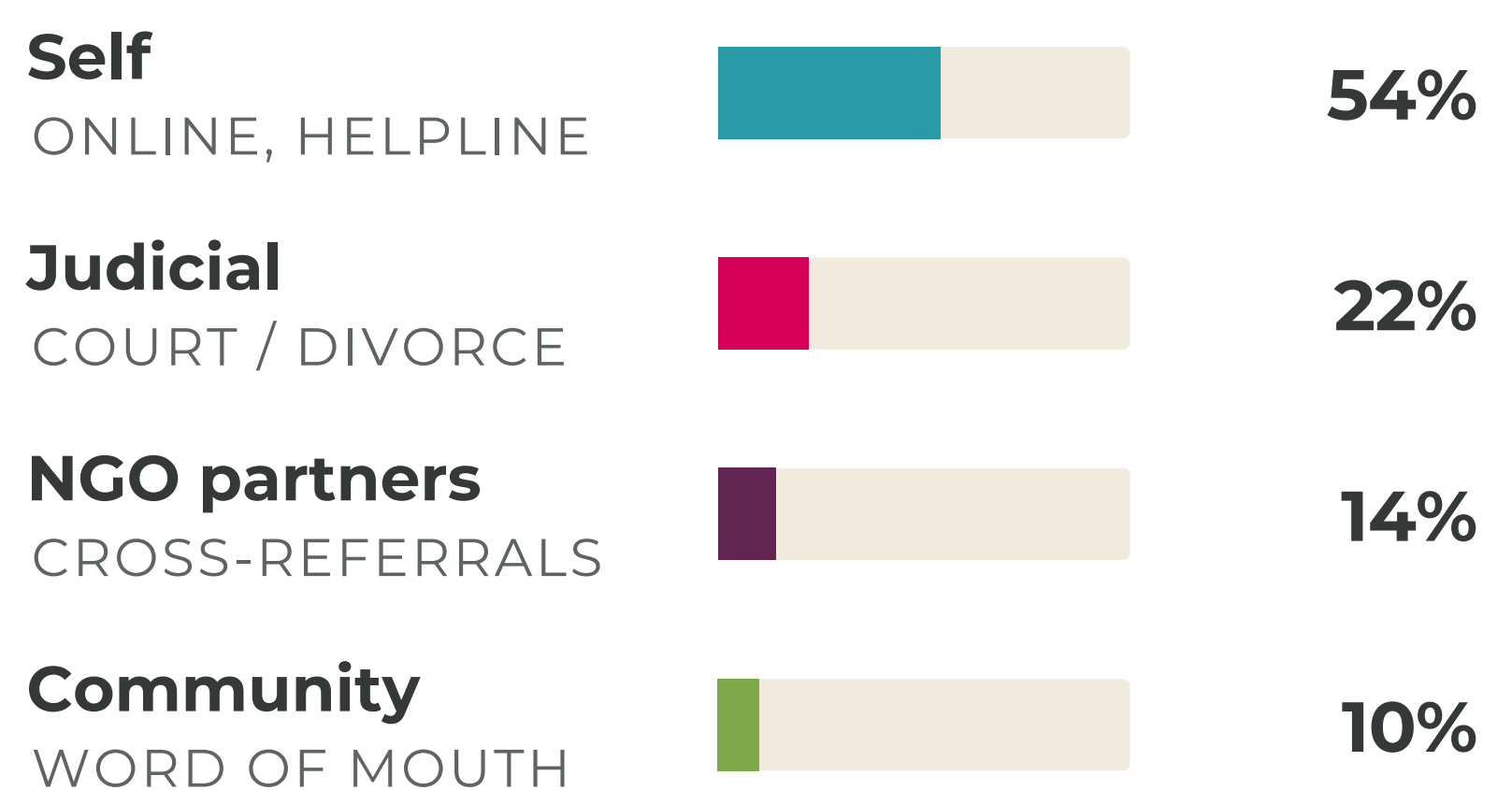
A standalone pillar of the response, engaging men and boys as partners in gender equality and protection.

ABAAD's Men's Centre continued to provide individual, couple, and family counseling throughout the period. One notable development was closer collaboration with judicial actors. Judges began referring men for structured counseling as part of divorce proceedings, with several cases progressing through individual, couple, and family therapy.

The Centre also saw a marked rise in self-referrals from across Lebanon, including from Lebanese living abroad who found the service through online searches, a sign of growing trust in and awareness of the service.

Men's Centre · referral sources

INDICATIVE BREAKDOWN · PERIOD TOTAL



Judges began referring men for structured counseling as part of divorce proceedings, a new pathway connecting the justice system to protection services.



09 Gender audit of *collective shelters.*

52 sites, 58 indicators, 3,016 observations across all seven Lebanese governorates.

Between March and May 2026, ABAAD assessed 52 collective shelters against 58 indicators, generating 3,016 individual observations. Together, these sites are home to **8,091 displaced people**.

Who lives in the assessed shelters

TOTAL POPULATION 8,091 · 52 SITES

343

Female-headed households

602

Adolescent girls

61

Pregnant women

92

Lactating women

24

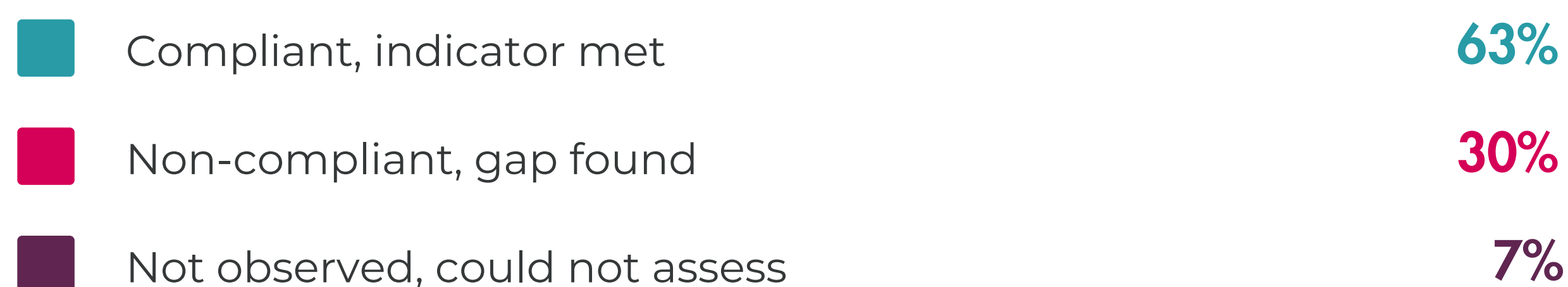
Unaccompanied children

56

Women & girls with disabilities

Overall compliance across 58 indicators

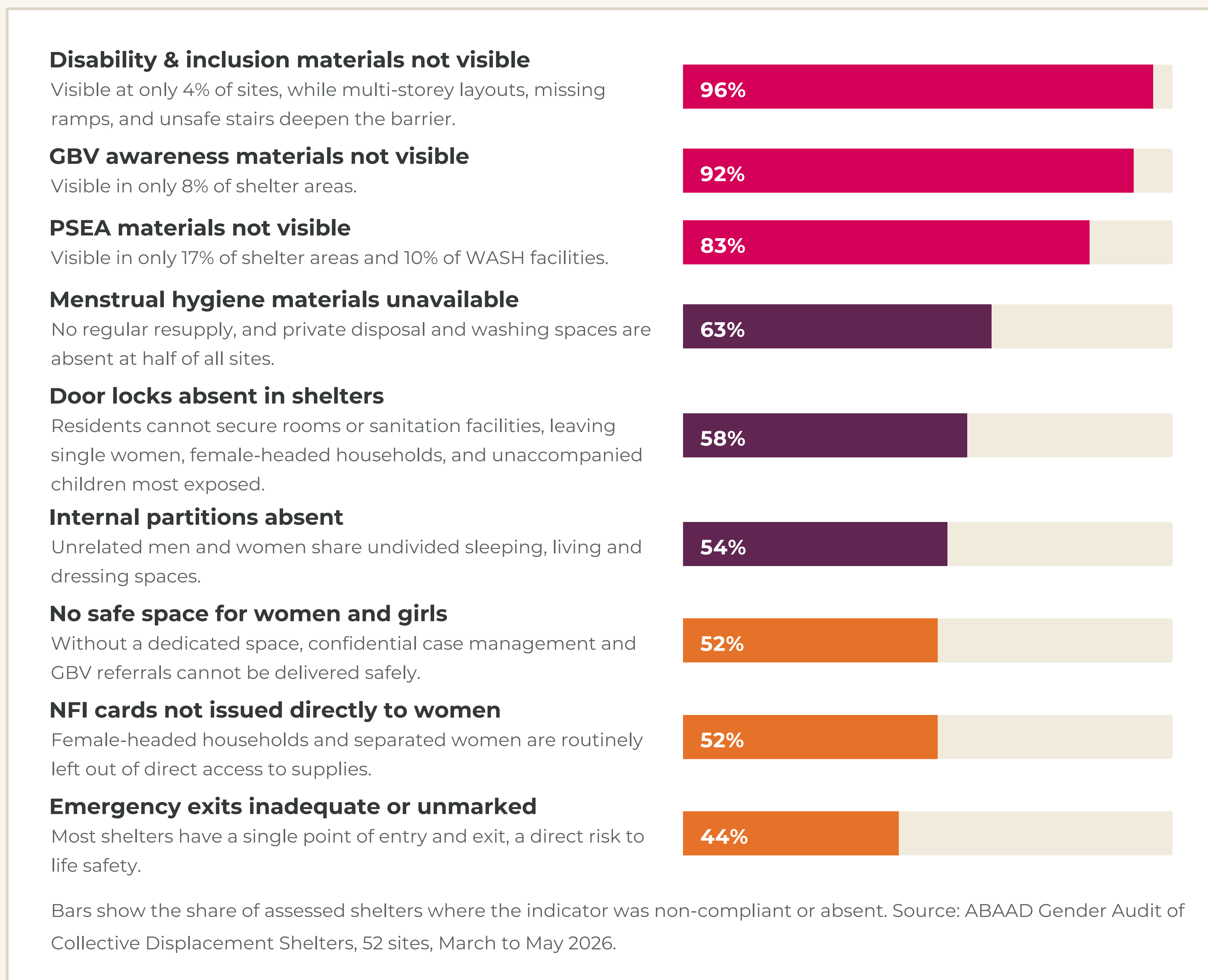
3,016 OBSERVATIONS · SHELTER, WASH AND DISTRIBUTION SECTORS



Key finding. The vast majority of displaced people have no visible information about their rights or how to report abuse: GBV awareness materials were present in only 8% of shelter areas, and disability inclusion materials in just 4%. These are not operational oversights, they are structural protection failures that demand an immediate sector-wide response.

Critical *gaps.*

The most urgent findings, ranked by share of shelters where the indicator failed.



The full Gender Audit report, with all findings and recommendations, is available [here](#).

10

Capacity *building.*

Six training streams reaching 620 frontline workers, case workers and volunteers, including 316 on PSEA.

316

7 SESSIONS

PSEA Training Series

Seven online sessions (18 to 26 March) delivered with the PSEA Network and LHDF, covering PSEA definitions, reporting mechanisms, survivor-centred approaches, and the responsibilities of staff.

145

7 ROUNDS

Child Protection through Puppetry

Frontline workers built their capacity to address sexual harassment with children through interactive, child-friendly puppetry, including the safe handling of disclosures and referrals.

53

4 ROUNDS · TOF

PSS for Caregivers

Training-of-Facilitators rounds prepared frontline workers to lead psychosocial support groups for caregivers in emergencies, using a step-by-step thematic approach.

44

3 LOCATIONS

Remote GBV Case Management

Trainings in Bekaa, Beirut, and Saida strengthened case workers' ability to manage GBV cases remotely during emergencies, including safe data handling and high-risk cases.

40

2 SESSIONS

Expression Through Arts

Frontline workers gained art-based psychosocial support tools to use in crisis and displacement settings.

22

2-DAY · ONLINE

Remote Psychological First Aid

University student volunteers trained in the core principles of PFA, ethical approaches to supporting people in distress, and referral pathways.

11

Donor *acknowledgements.*

ABAAD's emergency response is made possible through the generous support of our funding partners.

ABAAD's ability to respond rapidly and at scale, maintaining protection services across all seven Lebanese governorates throughout a period of mass displacement and active conflict, depends entirely on the commitment of partners who believe that gender-based violence cannot be placed on hold in a crisis.

We extend our sincere gratitude to all donors, partner organizations, and funding institutions whose support has sustained our operations during this period. Your contribution directly enabled the case management, psychosocial support, shelter services, capacity-building, and community outreach documented in this report.

Our partners & Donors



FOR PARTNERSHIP AND FUNDING INQUIRIES

Kinda Majari Partnerships & Resources Mobilization kinda.majari@abaadmena.org

12

Contact & *support.*

Every contribution sustains ABAAD's continued emergency response.

PARTNERSHIPS

Ghida Anani

Founder & Director

ghida.anani@abaadmena.org

Kinda Majari

Partnerships & Resources

Mobilization

kinda.majari@abaadmena.org

HELPLINES · 24/7

GBV Emergency Safe Line

+961 81 78 81 78

GBV Safe Shelter Safe Line

+961 76 06 06 02

Men Centre Helpline

+961 71 28 38 20

MAILING

51 Bustani Street, Sector 5,
Najjar Building, Furn
Chebbak, PO Box 50-048,
Beirut, Lebanon

General

abaad@abaadmena.org

Web abaadmena.org

Thank you for standing with ABAAD as we stand with the women, girls, men and boys of Lebanon.

GHIDA ANANI · FOUNDER & DIRECTOR



ABAAD

Resource Center for Gender Equality

EMERGENCY RESPONSE
IMPACT REPORT

June 2026