

Annual Report 2022





أبجد
abjad

CONTENTS



A WORD FROM ABAAD FOUNDER
AND DIRECTOR GHIDA ANANI



GENDER BASED VIOLENCE IN
LEBANON



ABAAD'S RESPONSE



CAPACITY BUILDING



ADVOCACY & CAMPAIGNS



RESOURCES



DONORS & PARTNERS



FINANCE

ABOUT ABAAD

Founded in 2011, ABAAD – Resource Centre for Gender Equality is a UN ECOSOC-accredited organisation that aims to achieve gender equality as an essential condition to sustainable, social and economic development in the Middle East and North Africa region. The dynamic team is comprised of dedicated activists, lawyers, consultants, social workers, volunteers and researchers, who creatively test new approaches as part of a larger effort to achieve an equitable society, free of hegemonic masculinities and violence against women.



OUR VISION

ABAAD envisions a world in which men and women live as equitable partners and work together to secure better lives for their future and the future of the societies they live in.



OUR VALUES



Integrity



Transparency



Inclusion



Equality





A WORD FROM OUR FOUNDER & DIRECTOR

Looking back at 2022, the COVID-19 pandemic and Lebanon's economic crisis deeply affected the people and communities we serve. Calls to ABAAD's Helpline have more than doubled since the pandemic began, showing a growing need for our services. Despite these challenges, we have continued to reach out and provide life-saving direct services to over 31,000 individuals, ensuring our interventions are effective through rigorous follow-up surveys.

This year was crucial as we began developing ABAAD's Strategic Plan for 2023-2025 and held coordination and networking meetings with women from local organizations to discuss potential partnerships. As part of our new strategy, we also started exploratory visits to establish new "Model Centers for Multidisciplinary Holistic Care to Combat GBV" across Lebanon. These centers, set to begin operating in 2023, will provide comprehensive support to those in need.

We also focused on strengthening our

partnerships with government entities. Our collaboration with the Internal Security Forces has continued to grow, enhancing their ability to respond to GBV cases and ensuring that survivors seeking help are met with understanding and support.

We've been actively involved in shaping the national strategy for women in Lebanon for the period 2022-2030. By working closely with the National Commission for Lebanese Women (NCLW), we're developing comprehensive plans aimed at protecting women and girls and ensuring their security and peace. This effort includes creating clear guidelines for GBV safe shelters across the country.

Our agreement with the Educational Center for Research and Development has opened new avenues for promoting gender awareness within the educational curriculum. This collaboration aims to make young people, parents, and educators more informed about gender issues, creating a safer space for everyone in our community.

Leading campaigns remains an important part of our efforts to spread awareness, change laws, and shift discriminatory perceptions. ABAAD's #NoShameNoBlame campaign has rallied support from members

of parliament for stronger legal protections against sexual assault. We are proud to celebrate our impactful campaigns, #Priority_too and #TheFightContinues, which have been recognized with two Gold Effie Awards for their effectiveness in promoting societal dialogue across the MENA region. This recognition highlights the power of our community and the survivors we stand alongside.

In all these initiatives, our goal remains the same, which is to work alongside government entities, local communities, and partners to build a society where gender equality is not just an ideal, but a reality.

Ghida Anani



GENDER BASED VIOLENCE IN LEBANON

In 2022, Lebanon grappled with escalating gender-based violence (GBV) issues, further intensified by a confluence of economic crisis and systemic challenges within its legal and societal structures. A particularly critical development was the judicial strike initiated in August, which profoundly disrupted the legal system's ability to effectively handle GBV cases. This strike led to widespread court closures, resulting in a backlog of unprocessed protection orders and, consequently, limiting victims' access to necessary legal remedies. This situation exacerbated the problem of underreporting in GBV cases, as numerous women, deterred by the fear of retaliation or the absence of familial support, hesitated to seek assistance.

Within the broader Lebanese context, the enforcement and effectiveness of laws intended to protect women from familial violence faced significant challenges. These laws frequently suffered from enforcement inconsistencies and were riddled with legal loopholes and a lack of resources. This complex legal framework placed women, especially those with disabilities, in particularly vulnerable positions, thereby complicating their safeguarding against diverse forms of violence.

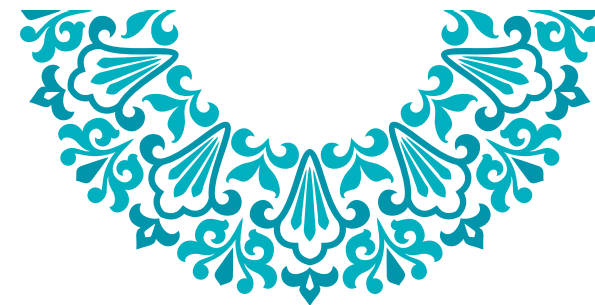
Furthermore, societal norms and cultural conditioning in Lebanon continued to perpetuate the normalization of inequality and violence against women and girls. The economic difficulties, characterized by job losses and financial struggles, exacerbated domestic tensions, contributing to an increase in violence. The intersection of these issues – legal, economic, and societal, alongside the specific challenges faced by women and girls with disabilities – highlights the complex and multifaceted nature of GBV in Lebanon. It underscores the urgent need for comprehensive, inclusive strategies that address the diverse and overlapping vulnerabilities within the population.





ABAAD'S RESPONSE

WOMEN AND GIRLS SAFE SPACES



In the past year, ABAAD's commitment to providing a safe haven for women and girls has been underscored by the substantial number of calls received for support and

assistance. A total of 1,292 calls

were documented, indicating a critical demand for services aimed at addressing gender-based violence (GBV). A detailed monthly breakdown reveals fluctuations in call volumes, with peak periods in March and April, seeing 185 and 187 calls, respectively, and a significant decrease in November and December, with only 22 and 15 calls, respectively.

Key Highlights:

Geographical Reach

The majority of calls originated from the BML region, accounting for nearly **40%** of the total, highlighting the acute needs in this area. Beqaa and HQ regions followed, demonstrating the widespread demand across Lebanon.

Demographic Insights

Syrian nationals represented over 73% of the callers, with Lebanese nationals making up about 24% emphasizing the particular vulnerabilities faced by the refugee population.

Types of Violence Reported

Emotional and physical abuse were the most commonly reported forms of GBV, constituting nearly **45%** of the calls. Additionally, a considerable number of calls (**39.4%**) fell under "None of the above/Relevant to GBV," pointing to a broader spectrum of GBV issues and the need for a flexible and inclusive response framework.

.

Month	Calls Numbers
January	183
February	133
March	185
April	187
May	121
June	65
July	106
August	71
September	151
October	53
November	22
December	15

Total Reached in 2022:

Activities	Beirut-Lebanon	Bekaa-Baalbeck	North	South	Akkar	Total
Case Management	882	616	130	49	79	1756
Women and Girls Safee Spaces	13343	11879	2160	2608	415	30405
Men Center	68	0	0	0	0	68

1. Case Management:

Throughout 2022, ABAAD's Case Management (CM) service extended its reach to

1,756 women and girls, addressing various forms of GBV across Lebanon. The service witnessed the highest engagement in the BML region, with **882 cases**, followed by Bekaa-Baalbeck with **616 cases**. Other regions, including the North, South, and Akkar, also accessed these critical services, underscoring the pervasive need across different demographics.

2. GBV Types and Diverse Populations:

The predominant form of GBV reported was physical assault, constituting **49.1 %** of cases, with psychological and emotional abuse following at **35.2 %**. Sexual assault cases were also significant, comprising **17.2 %** of the total, while reported rape cases accounted for **4 %**. Other GBV forms, including denial of resources and various forms of forced marriage, represented a smaller percentage of the cases.

The service reached individuals across different marital statuses, highlighting the widespread impact of GBV. Married or cohabitating individuals reported the highest instances of physical assault, while higher percentages of psychological/emotional abuse were noted among divorced, separated, and single individuals. This data emphasizes the nuanced nature of GBV across diverse populations



The types of gender-based violence (GBV) reported during the calls are:



321 Calls
Physical abuse



93 Calls
Psychological abuse



264 Calls
Emotional Abuse



509 Calls
None of the above/Relevant to GBV



Feedback and Outcomes:

Feedback from participants underscores the efficacy and impact of ABAAD's case management services, alongside areas for improvement. A remarkable **100 %** of participants reported a greater understanding of themselves post-intervention. Respect for participants' opinions and rights in decision-making was highly valued, with **96.9 %** satisfaction, and **91.7 %** felt actively involved in developing their action plans. However, **62.5 %** of participants agreed or strongly agreed that they achieved a positive change in their life, indicating room for enhancement in ensuring more tangible impacts on survivors' lives. ABAAD takes this feedback seriously and is committed to refining its strategies and approaches to maximize positive outcomes for all participants.

1,610 out of **1,756** cases (**91.6 %**) successfully closed, and **146 cases** carried over into 2023. This success rate reflects the profound and positive impact of ABAAD's comprehensive support on the lives of women and girls across Lebanon.



Prevention Activities
Total Number of Participants



11650
Awareness Session



6402
Psychosocial support
(BLSP, Masculinities, Program P,
Program Ra,
Socio economic, Caregivers)



87
Emotional Support Group



410
Activities for Men



2194
Adolescent Girls Event



9294
Sensitization Session



328
Community Based Group

Awareness Sessions:

Awareness-raising sessions covered a broad spectrum of topics, ranging from singular sessions focused on gender-based violence (GBV) and related issues, such as sexual harassment, crisis management, and mental health, to subjects aimed at women's empowerment. These included discussions on gender roles, gender equality, and positive parenting techniques.

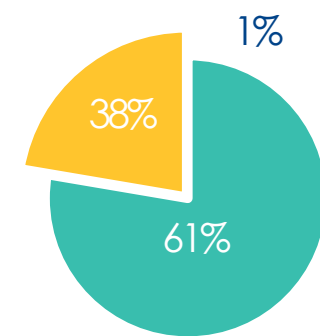
ABAAD conducts a diverse array of events, from information sessions about its services to workshops on specific themes like anger and stress management, or menstrual hygiene. Community events, such as those commemorating International Women's Day, are integral to our outreach, with some specifically targeting GBV and others addressing related issues, including early marriage and exploitation.

Overall, these topics are carefully chosen to meet the pressing needs and bridge the protection gaps within both host and refugee communities. ABAAD is dedicated to addressing a comprehensive range of issues related to gender and violence, focusing on providing education, support, and resources to those affected by GBV, thereby fostering a more informed and resilient community.

Psychosocial support:

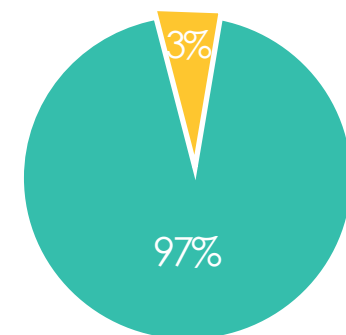
PSS Nationality Distribution

Lebanese Other Syrian



Gender Distribution

Female Male



In the area of psychosocial support, ABAAD has demonstrated significant impact, albeit facing challenges in participation. A notable **14%** of participants dropped out, having attended fewer than three sessions. A primary reason for these dropouts, affecting **33.3%** of those who left, was the rise in transportation costs, which made it challenging for women to attend the sessions.

High Satisfaction Rates

Despite these obstacles, the level of satisfaction among participants remained exceptionally high, with

99% To **100%**

expressing agreement across all feedback statements:

Importance of Information: Participants highlighted the value of the information provided.

Effective Communication: The effectiveness of the facilitators was noted in their ability to communicate the session content clearly.

Relevance to Personal Experience: The connection of the themes to participants' personal experiences was well-received.

Responsive to Needs: The sessions were praised for being responsive to participants' wants and needs.

Adequate Time: Participants appreciated that enough time was given for discussions.

Questions Addressed: Participants' questions were adequately answered.

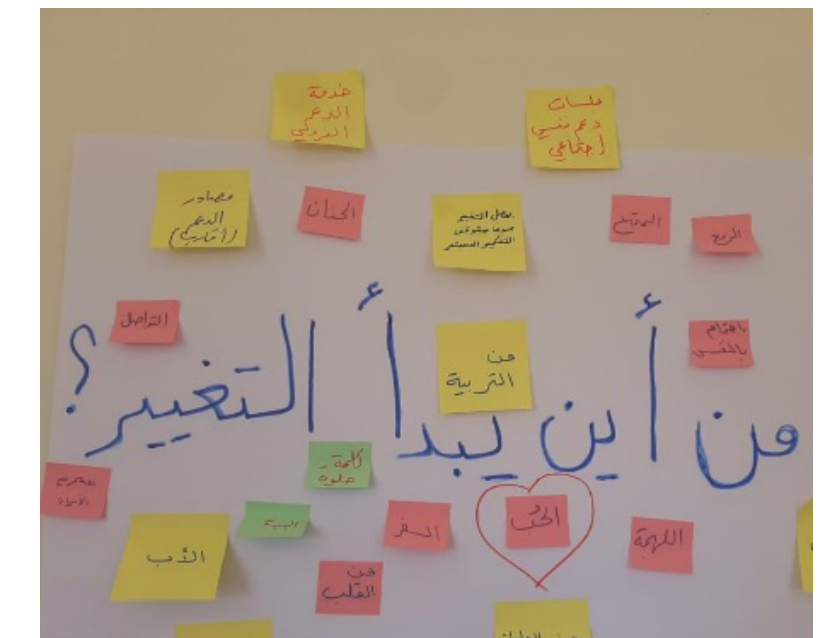
Personal Benefits: The sessions were beneficial on a personal level.

No Negative Feedback: No disagreements or negative feedback were reported, underscoring the sessions' success and impact for discussions.

Questions Addressed: Participants' questions were adequately answered.

Personal Benefits: The sessions were beneficial on a personal level.

No Negative Feedback: No disagreements or negative feedback were reported, underscoring the sessions' success and impact.



Key outcomes from the sessions include:

68%

Empowerment

Shows participants who felt empowered, rating their ability to complete tasks at **8 or 9 on a scale.**

77%

Desire to Make Changes

Represents participants with a heightened desire to make changes in their personal lives, also rating this desire **8 or 9 on a scale.**

61%

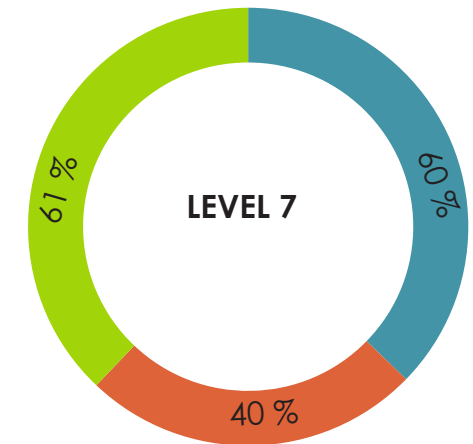
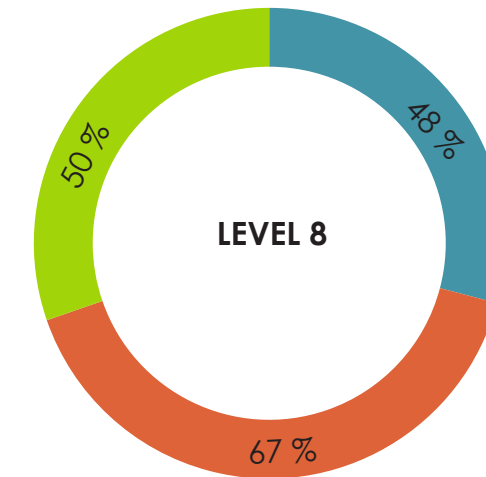
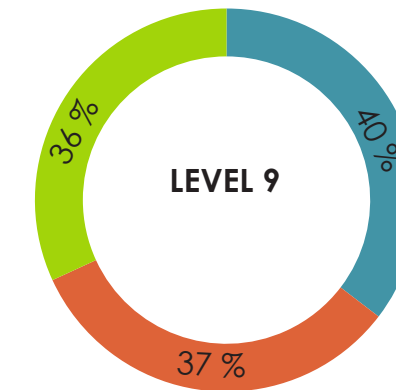
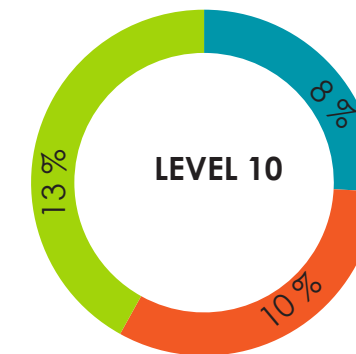
Increased Proficiency

Indicates participants who reported increased proficiency in various daily life topics, with scores of **7 or above**

These outcomes indicate that the psychosocial support sessions met the immediate needs of the participants, promoting a sense of empowerment and proficiency in handling daily life challenges. The high satisfaction rates and positive feedback suggest that participants found these sessions highly valuable, advising others to partake in similar support. This underscores the critical role of psychosocial support in facilitating personal growth and resilience among participants, despite the logistical challenges some may face in attending these sessions.

Wellbeing over 10

■ Task Completion ■ Desire to Change ■ Proficiency



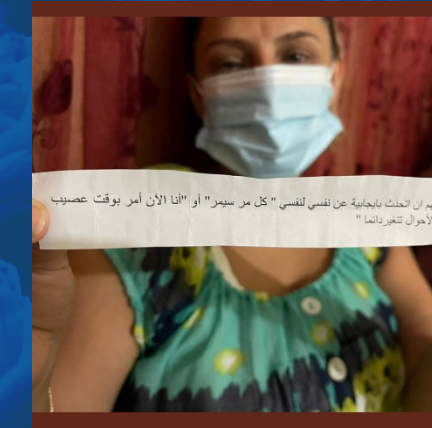
From the Field

“ I was going through an internal state of chaos and negative thoughts that resulted in violent behavior with my family. I really needed support to deal with this anger. I am enrolled in a training workshop on positive parenting and I am excited to complete the rest of the sessions. It helps me adapt to pressures, deal with my anger, and carry on my children's education more positively.”- Souhour, Qaa, a participant from our series of life skills workshops and training sessions focused on positive parenting and coping mechanisms for the current crisis in Lebanon



“I neglected myself a lot although I deserve attention and self-appreciation and love. I am unique!” a participant from the WGSS“

“ Some beginnings are harsh, the story started when I dropped out of school at the age of 12, fell in love, ran away, was sold to a husband at the age of 15, got abused by the entire family, fled from the war in Syria to Lebanon... until I learned about ABAAD and started receiving psychosocial and emotional support. After that I engaged in lessons in hairdressing skills and started my own project. Some beginnings are harsh, but they were not the end. Now, I have a goal to look forward to. Now, I believe in me.” Nour: Pseudo name, GBV Survivor & beneficiary at Women and girls' safe spaces at ABAAD



MEN CENTRE

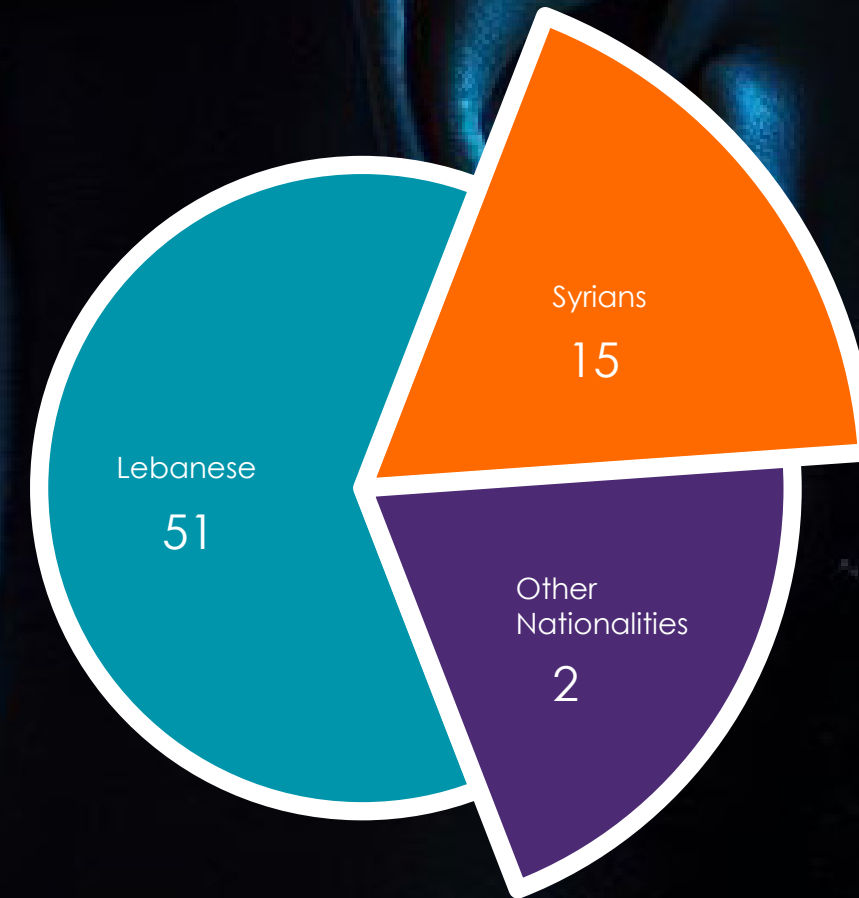
ABAAD's Men Center is a safe space providing mental health and psychosocial support to men on individual, couple, family and community levels, to dispel singular and patriarchal notions of masculinity and commit to healthy, non-violent, and gender equitable behaviours upon which they can model their lives.

In 2022

ABAAD Men Center served a diverse group of

68 beneficiaries,

indicating a focused effort to address specific needs among men in Lebanon. The demographic breakdown shows that the majority of these beneficiaries were



This reflects the center's inclusivity and its role in providing support across different communities.

Therapy Services Breakdown:

Individual Therapy:

The main service at the Men's Center, with

56 beneficiaries

receiving this form of support, highlighting its importance in addressing personal challenges.

Couple Therapy:

Provided to

5 beneficiaries

emphasizing the center's commitment to addressing relationship dynamics and fostering healthier partnerships.

Couple Therapy:

Provided to

7 beneficiaries

underscoring the importance of family dynamics in the overall well-being of individuals.

On average, each beneficiary participated in approximately **5 sessions**, based on a total of **345 sessions** for **68 attendees**. This indicates a thoughtful engagement strategy, ensuring meaningful and impactful interactions.

Common Reasons for Seeking Help:

Anxiety Disorders:

The most prevalent issue,

25% of cases,

representing nearly a quarter of all cases, signaling a critical need for anxiety management support.

Controlling Aggression and Emotions:

The second most common reason, accounting for about

18% of cases,

highlights the need for emotional regulation skills.

Sexuality Issues:

Although less common, affecting

4% of cases,

this indicates the center's role in addressing complex personal identities.

Mood Disorder and Communication Challenges:

Significant concerns, representing

16% and **7%** of cases,

respectively, pointing to the need for emotional support and effective communication skills.

Social Isolation and Masculinity Issues:

Account for

12% of cases,

illustrating societal challenges and the pressure of traditional gender roles.

PTSD, Panic Attacks and Other:

Less frequent but equally important, emphasizing the center's broad support spectrum.

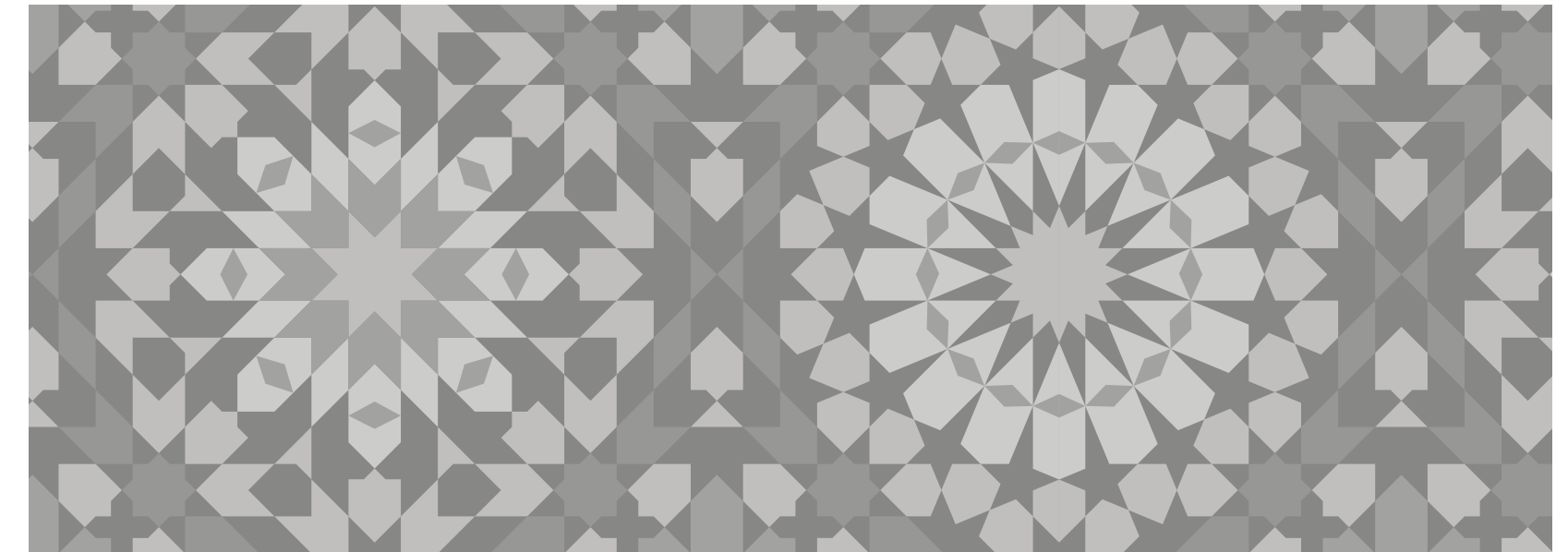
EMERGENCY Temporary Safe Housing-

AL DAR



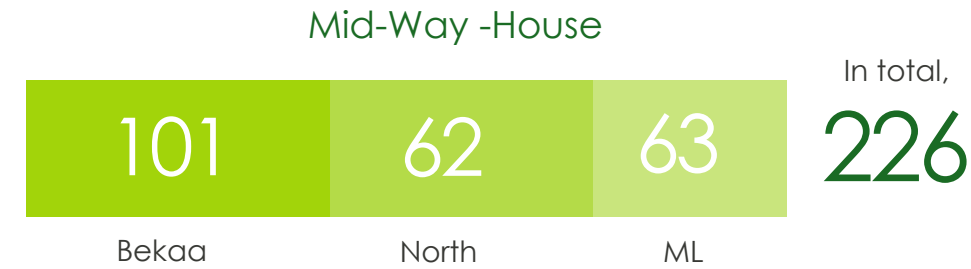
Located in three different governorates in Lebanon, ABAAD's three Emergency Safe Houses are free and temporary safe shelters for women at risk or survivors of GBV offering:

- Immediate safe-housing (24/7)
- Crisis counselling
- Emergency support and information on legal rights and court representation
- Psychosocial support / healing through art activities
- Mental healthcare
- Life skills' building activities enhancing women's employability post-exit from shelter
- Forensic medical care/ Post-Exposure Prophylaxis (PEP) services for survivors of sexual assault
- Referrals for the provision of welfare, social services, and income assistance, as needed



Women, Girls and Boys

were admitted across the shelters, with the breakdown as follows:



The duration of stay is calculated by the number of days between the admission and exit dates for each beneficiary. The durations varied widely, from a few days to several months, with the longest stay recorded at

307
Days

Number of dependents/accompanying person in the MWH



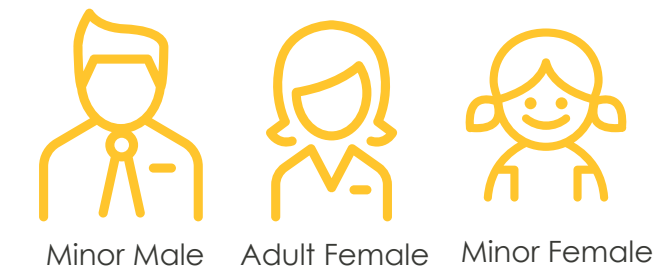
In total,

121



In total,

146



Type of GBV

Emotional Abuse

17.36%

Rape

7.44%

Phy/Sex

0.83%

Sexual Harassment

14.05%

Physical Abuse

54.55%

Psychological Abuse

5.79%

Marital Status

Divorced / Separated

14.05%

Widowed

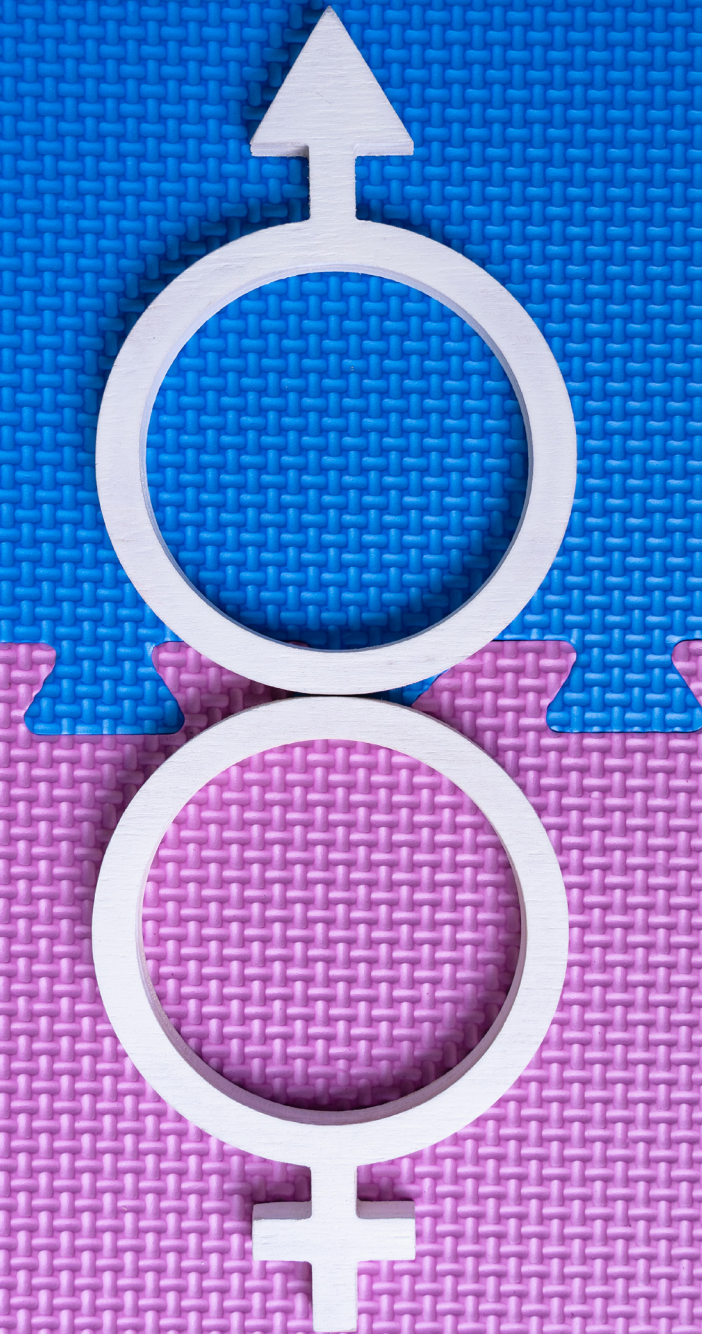
2.48%

Married/ Cohabiting

40.50%

Single

42.98%



Exit survey results:

Exit surveys from both the South and Bekaa centers reflected high satisfaction levels with the services provided. Key highlights include:

Medical Care: Consistently high ratings for medical care and follow-up.

Facility Standards: Excellent ratings for general cleanliness and food preparation.

Participant Feedback: Overall, participants expressed gratitude and satisfaction.

The surveys highlight the positive impact of ABAAD's safe shelters on beneficiaries, with high satisfaction levels across essential services. These findings highlight the effectiveness of 'Al-Dar' in providing a secure and supportive environment for survivors of GBV.



Visit of the UN Security Council Experts on Women, Peace and Security to the ABAAD Emergency Safe Shelter



A solidarity visit by a delegation from the IRC and the World Bank to the ABAAD Emergency Safe Shelter



The ABAAD Emergency Safe Shelter hosted the Netherlands' Ministry of Foreign Affairs-MOFA evaluation team, facilitating meaningful dialogue between the team and the shelter's residents

Jina el Dar (Mobile Bus)

Jina Al Dar, ABAAD's innovative mobile bus initiative, tours the most marginalized and remote areas of Lebanon, delivering crucial services aimed at preventing and mitigating violence against women and girls. This intervention seeks to improve protection prospects for refugees and host communities alike, empowering individuals to exercise their rights and realize their potential as equal members of society.



- Awareness Raising:** Through a range of dynamic activities—including information sessions, video screenings, live discussions, interactive and theatrical performances, presentations, and community events—Jina Al Dar educates and informs communities on vital topics. These include understanding gender and social norms, recognizing and addressing GBV, and highlighting available services.
- Resource Utilization:** Leveraging ABAAD's extensive resources in health, legal matters, and protection, Jina Al Dar ensures that the most vulnerable women and girls have improved access to quality services.
- Community Engagement:** The initiative thrives on volunteer mobilization, promoting active community participation and raising awareness around humanitarian causes.
- Building Resilience and Self-Agency:** At its core, Jina Al Dar focuses on strengthening local communities' resilience and self-agency, enabling informed decisions that positively impact their lives.

In 2022, ABAAD successfully conducted 45 Jina Al Dar rounds across Lebanon, covering Bekaa, the north, Mount Lebanon, and the south. This extensive outreach effort engaged a total of 3,425 participants in its various activities and sessions. This achievement underscores ABAAD's commitment to reaching out and making a tangible difference in the lives of individuals in even the most remote locations, and the critical role of mobile initiatives in extending the reach of GBV prevention and mitigation efforts.

Nationality	Female	Male	Total
Egyptian	1	0	1
Iraqi	0	1	1
Lebanese	1033	666	1699
Palestinian	21	29	50
Syrian	911	763	1674

Grand Total
3425

The background is a dark blue gradient with abstract, organic shapes in shades of green and light blue. Several stylized, light blue human figures are scattered across the scene, some appearing to be in motion or interacting. The overall aesthetic is modern and digital.

CAPACITY BUILDING

1) In 2022, ABAAD made progress in addressing GBV and promoting youth leadership in Lebanon. Here's an overview of these efforts:

Youth Engagement and Development: ABAAD worked with youth-led CSOs and launched an outreach program through Adyan's youth parliament. This approach provided insights for ABAAD's strategy and introduced the goals of Generation Gender to young participants.

Comprehensive Youth Program: ABAAD selected 50 individuals (ages 35-18) for an introduction to the program. This included a curriculum developed through a needs assessment, focusing on technical expertise and soft skills. Sessions covered gender roles, positive masculinities, PSEA principles, and workshops on communication and critical thinking.

Digital Storytelling and Mentorship: A digital campaigning workshop allowed youths to challenge gender stereotypes creatively, leading to an online campaign. ABAAD also trained 10 mentors to guide and support new members, creating a cohesive learning environment.



2) In 2022, ABAAD's capacity-building initiatives reached 30 local organizations across SCC countries (Lebanon, Yemen, Syria, Iraq, Sudan, Ethiopia, and Palestine). These initiatives focused on gender sensitivity, mental health, and accountability through a comprehensive approach:

Integrated Gender Trainings:

- Gender Core Concepts: Provided a foundational understanding of gender concepts in diverse contexts.
- Gender Integration: Focused on gender mainstreaming in programs and policies.
- Masculinities Exploration: Explored the complexities of masculinities and their impact on gender dynamics.

Gender-Sensitive Mental Health Support:

- MHPSS Training: Emphasized gender sensitivity in mental health and psychosocial support, addressing unique gender-specific needs.
- Iraq Focused Approach: Ensured gender-sensitive interventions in Iraq, covering gender roles, GBV, and the intersection with mental health.
- Masculinities Exploration: Explored the complexities of masculinities and their impact on gender dynamics.



Accountability and PSEA Trainings

Conducted comprehensive sessions in Erbil and Ethiopia, covering sexual exploitation and abuse prevention, population accountability, and anti-corruption measures in humanitarian sectors.

Masculinities and Engaging Men:

Conducted in Lebanon, Yemen, Syria, and Palestine, focusing on reducing gender discrimination, engaging men in gender justice, and promoting partnership and equality cultures.

ABAAD Gender Integration Toolkit:

Developed as a versatile training guide, adaptable across various sectors, focusing on gender norms and their impact on program contexts.

Civil Society Organization Trainings:

Targeted training for CSOs like Abnaa Saida and Al Jalil Association, emphasizing gender core concepts, masculinities, and accountability.



3) Internal Security Forces (ISF) Trainings

ABAAD collaborated with the ISF to address gender-based violence through institutionalizing and enhancing the ISFs capacity to prevent and respond to such incidents. 71 ISF members received ToTs on topics related to GBV. Those trained officers rolled out the trainings to other 726 ISF officers assigned by the ISF administration





ADVOCACY & CAMPAIGNS

In addition to the #NoShameNoBlame campaign, which involved lobbying with parliamentary blocs to obtain signatures for the draft law amending Chapter One of Chapter Seven of the Lebanese penal law, ABAAD actively participated in important dialogues at national, regional, and global levels. These efforts aimed to bring attention to issues such as child protection, sexual exploitation, abuse and harassment, and gender-based violence. Furthermore, ABAAD collaborated with the National Commission for Lebanese Women (NCLW) to influence legal frameworks and shape national strategies for women's rights, including the National Women's Strategy.



Caption: ABAAD, led by Executive Director Mrs. Ghaida Anani, signs a memorandum of understanding with the National Commission for Lebanese Women, represented by its President, Mrs. Claudine Aoun. Supported by the Dutch Ministry of Foreign Affairs, this partnership aims to strengthen the protection of women and girls in Lebanon, promote gender partnership, and implement the national action plan for Security Council Resolution 1325. The agreement includes developing standards for Emergency Safe Shelter Centers for survivors of gender-based violence and updating operational procedures.



Caption: "Exceptional times require exceptional actions and collaboration. The Women's Movement in Lebanon has always led political reform and the push for inclusive citizenship," Gaida Annani, Founder and Director of ABAAD, during the Women's Civil Society Platform press conference announcing demands to achieve gender equality in the next parliamentary elections

DAY 13
#16DAYS



AS AN ACCOUNTABILITY AND PROTECTION AGAINST SEXUAL EXPLOITATION AND ABUSE (PSEA) COORDINATOR AT ABAAD, I MAKE SURE THAT BENEFICIARIES ARE AWARE OF THEIR RIGHTS AND HOW TO REPORT SEXUAL MISCONDUCT BY AID WORKERS IN A SAFE AND CONFIDENTIAL MANNER. IN ADDITION, I WORK ON SENSITIZING AID WORKERS ON PSEA, SUPPORTING ORGANIZATIONS IN SETTING PREVENTION AND RESPONSE MECHANISMS, AND ADVOCATING FOR LEGAL REFORM. ”

Lara Habib,
AAP & PSEA Coordinator ABAAD - Co-Chair of PSEA Network in Lebanon










Caption: ABAAD joins other civil society organizations, activists, and members of parliament in protesting in front of the Palace of Justice in Beirut, demanding that sexual assault crimes must be met with severe punishment and reaffirming the right of children and their parents to access justice, care, and specialized follow-up

#NoShameNoBlame Campaign



The #NoShameNoBlame campaign, launched during the 16 Days of Activism against Gender-Based Violence, aims to amend Chapter Seven of the Lebanese Penal Code on sexual assault crimes, advocating for stricter penalties. Built on a national survey by ABAAD, the campaign highlights that over half of women who were sexually assaulted in Lebanon in 2022 did not report the crime due to concerns about dignity and honor. While 84 percent of women not subjected to sexual violence would report such an assault, this number significantly drops to 55 percent for those who experienced it.

The survey, which included



revealed that only 57 cases of sexual assault were reported to the Security Forces between January and October 2022. This included 20 cases of rape and 37 cases of sexual harassment. ABAAD's core message is clear: sexual assault is a crime that deserves serious punishment to achieve justice for survivors and to protect women and girls from future assaults.

The strategy of the #NoShameNoBlame campaign is multifaceted. ABAAD conducted a nationwide survey to gather data on the prevalence of sexual violence and the frequency of reports by survivors, ensuring the campaign was informed by accurate and relevant information. To amplify the message, ABAAD partnered with well-known Lebanese influencers, including actors, musicians, and social media personalities, to reach a wider audience. These influencers shared powerful videos and messages highlighting the impact of sexual violence and the importance of speaking out.

In addition to advocacy and lobbying efforts with parliamentary blocs to amend Chapter Seven of the Lebanese Penal Code, ABAAD organized a stunt outside Lebanon's parliament on November 26th. Dozens of rape survivors, activists, and influencers hung their dirty laundry outside parliament, amplifying the voices of those who couldn't speak. The campaign also included a webisode series hosted by Nour Arida, featuring heart-wrenching testimonials from rape survivors, and a powerful "Dirty Laundry" film created in collaboration with artist Remie Akl, highlighting the culture of shaming rape victims in Lebanon.

The #NoShameNoBlame campaign has had a significant impact, gathering a promising number of Lebanese parliamentarians' signatures and sparking open discussions about sexual violence across the Arab world and beyond. The campaign achieved a cumulative reach of



It was the #1 trend on Twitter in Lebanon, even during the World Cup, with an overall positive sentiment of 82 percent.

AWARDS

This year, ABAAD celebrates alongside survivors of violence and sexual assaults, partners, and the communities it serves, having won two Gold Effie Awards for the #Priority_too and #TheFightContinues campaigns. The Effie MENA Awards recognize NGOs for their impactful and effective marketing strategies, highlighting ideas that foster meaningful dialogue across the MENA region





RESOURCES



Statistics from a national study by ABAAD reveal that women subjected to sexual violence avoid reporting. The study also explores the reasons why women abstain from reporting sexual assault crimes.

[Access the study Here](#)



The Status of Women with Disabilities in Lebanon report presents a snapshot of the socio-political and economic impact on women with disabilities from an intersectional lens.

[Download the report Here](#)



A quantitative and qualitative study carried out by ABAAD with financial support from the United Nations Democracy Fund (UNDEF) entitled "Women's Political Participation – Lessons Learned & Future Plans from the 2022 parliamentary elections"

[Access the study Here](#)



ABAAD released the Arabic version of the report entitled 'The Sorrow remains inside' which was developed in coordination with the Global Women's Institute at George Washington University. The report provides a better understanding of mental health among adult women survivors of gender-based violence in Lebanon.

[Access the full report here.](#)



Empower your organization with the needed PSEA tools to protect our communities.

All the tools targeting the general audience, front liners, children, and special needs individuals are available on this new mobile application.

Download it on [Apple](#) or [Android](#)



Why is Security Council Resolution 1325 important to women and reinforcement of peace and security? What regulations does it provide to integrating it into the work approaches and programs of non-governmental organizations, the security sector, media, and other institutions, to support and preserve women's rights and gender justice? [Click here for new resources on Resolution 1325 on Women, Peace and Security \(WPS\).](#)



The Path Coalition: Power in Inclusion and Diversity

In partnership with the Lebanese Union for People with Physical Disabilities (LUPD), and with the support of the International Foundation for Electoral Systems (IFES), ABAAD completed the Identify, Interpret, and Respond project which promoted intersectional advocacy strategies in countering discrimination and barriers to equal participation and equal rights.

[Find all the project's resources here.](#)



Baseline study: "Toward a Gender-Equitable Society" Project -

This report captures findings from the baseline study of the project "Toward a Gender-Equitable Society" implemented in partnership with Search for Common Ground. The expected impact of the project is to contribute to an enabling environment in which social norms around gender-based violence (GBV) will be shifted and access to safe and quality prevention and response services will be increased. [Download the study](#)



Dayman Waata campaign is now accessible to women with hearing difficulties.

[Watch the video](#)



This report is developed by ABAAD in coordination with The Global Women's Institute at the George Washington University. It provides a better understanding of mental health among adult women survivors of GBV in Lebanon, in order to increase awareness among the affected population and health/service providers about how these issues are related, and support better referral pathways as well as access to and quality of services and policies. [Download the report](#)



"Justice for me is living free and as a human being" - An Analytical Study of Access to Justice for Sexual and Gender-Based Violence case of Syrian Refugees in Lebanon. [Download the study](#)



DONORS & PARTNERS





FINANCES



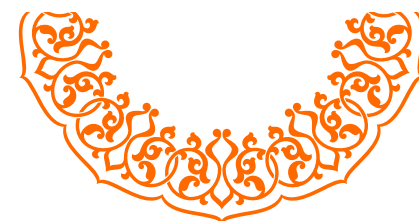
Expenditures

9,278,151.58 USD



Income

8,765,463.63 USD



Thank you for making this journey
towards change possible!

The *Abazed* Team



51 Bustani Str., Sector 2, Najjar Bldg, Furn El Chebbak
P.O. Box 50-048 Beirut Lebanon
+961 1 28 38 20/1 | +961 70 28 38 20
abaad@abaadmena.org
www.abaadmena.org
    /abaadmena